



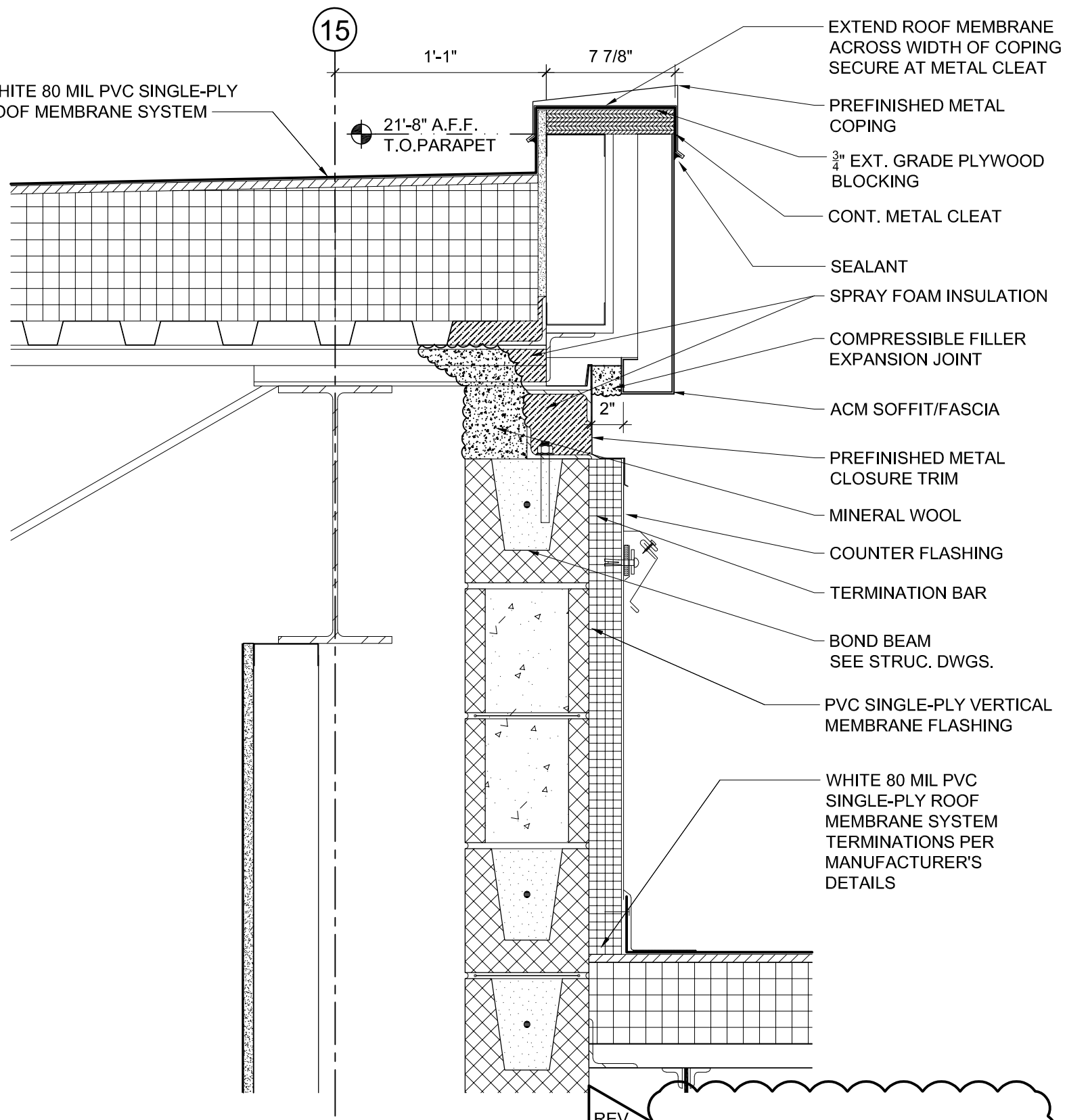
SAMPSON COUNTY
911 & ES
FACILITIES

CLINTON,
NORTH CAROLINA

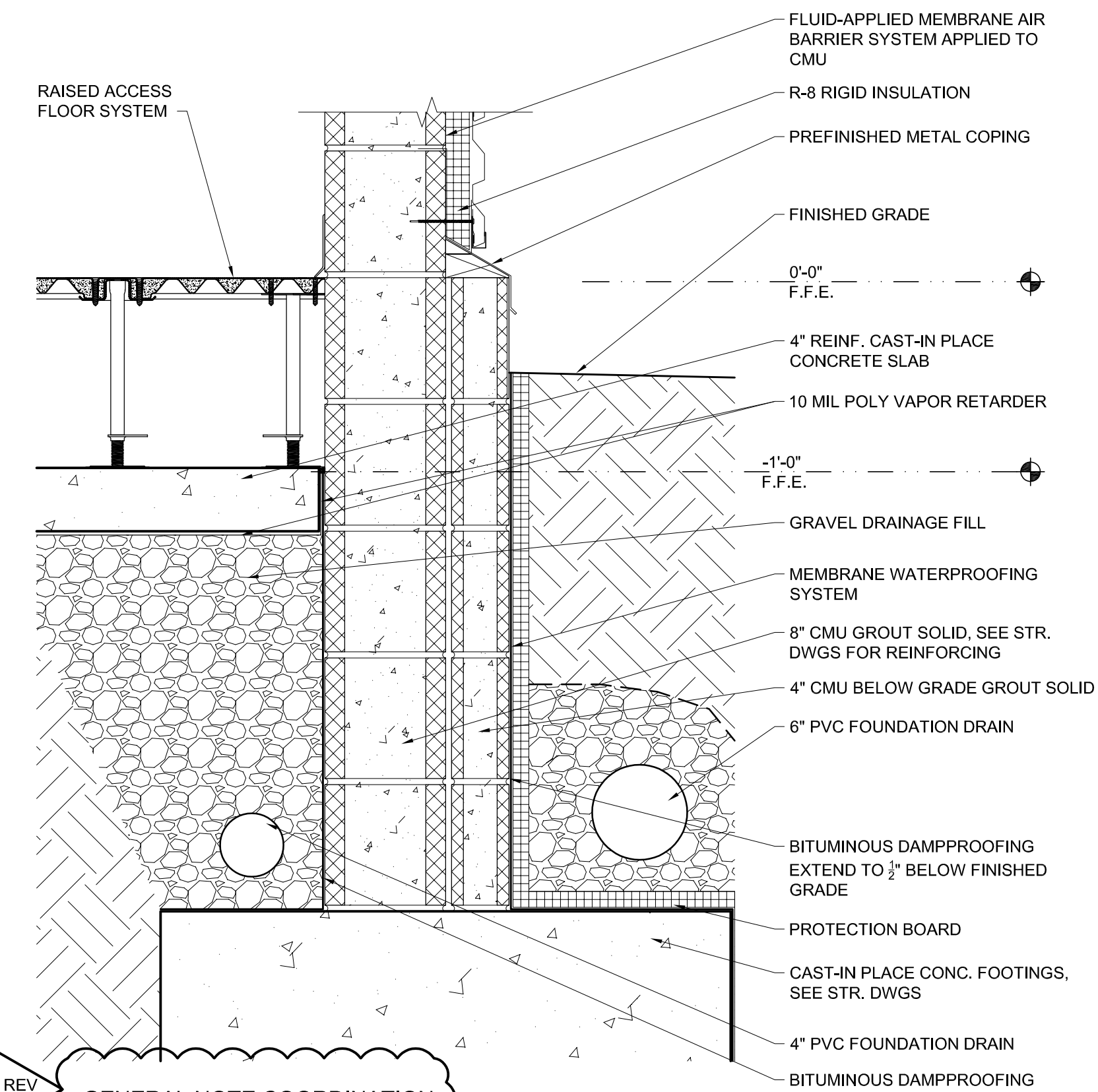
CONSTRUCTION
DOCUMENTS

SECTION DETAILS

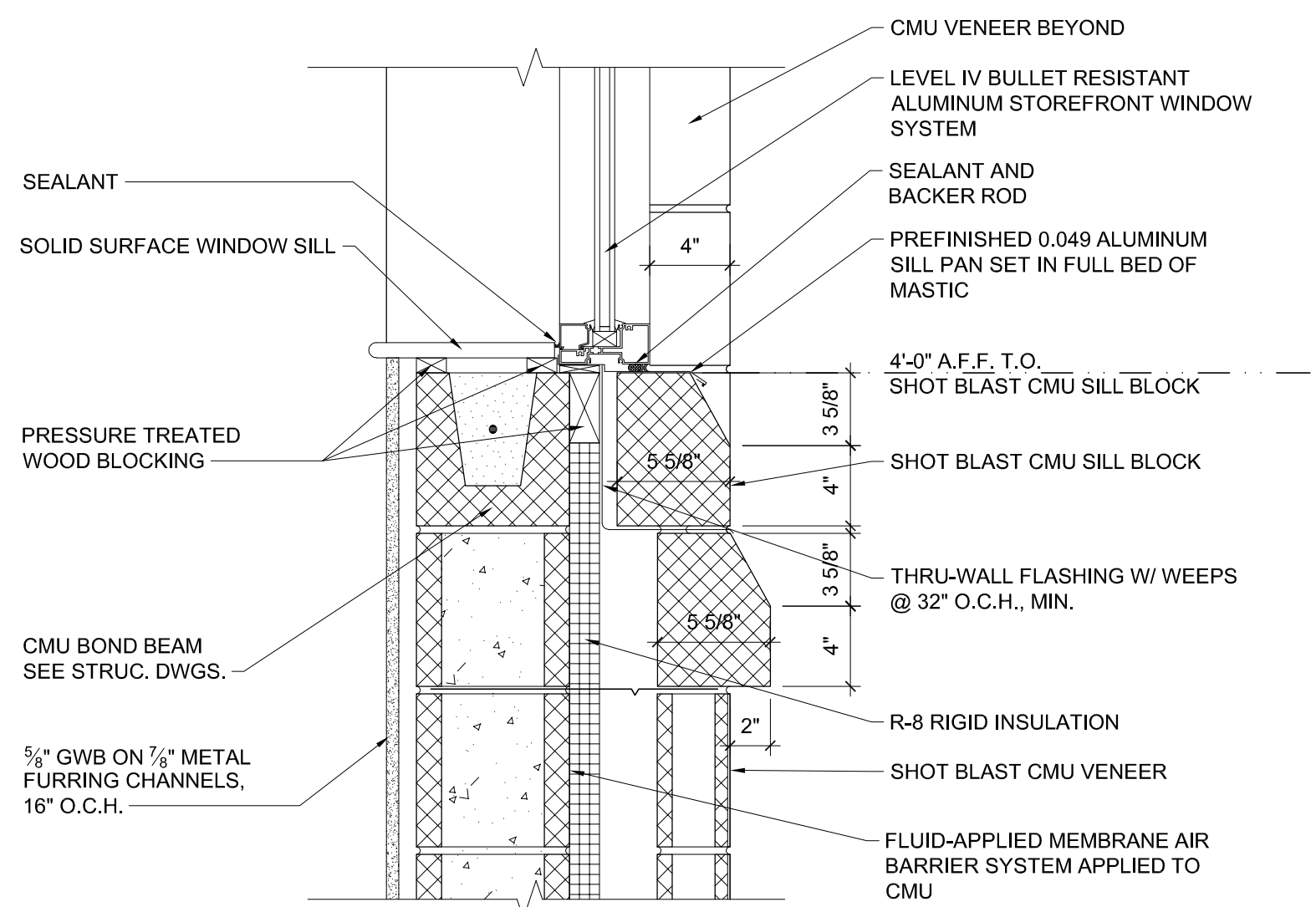
| | | |
|------------|------------|--------------|
| DATE | 12.04.2020 | |
| PROJECT NO | 20003 | |
| REVISIONS | | |
| NUM. | DATE | DESCRIPTION: |
| REV1 | 12/17/20 | REVISION 01 |



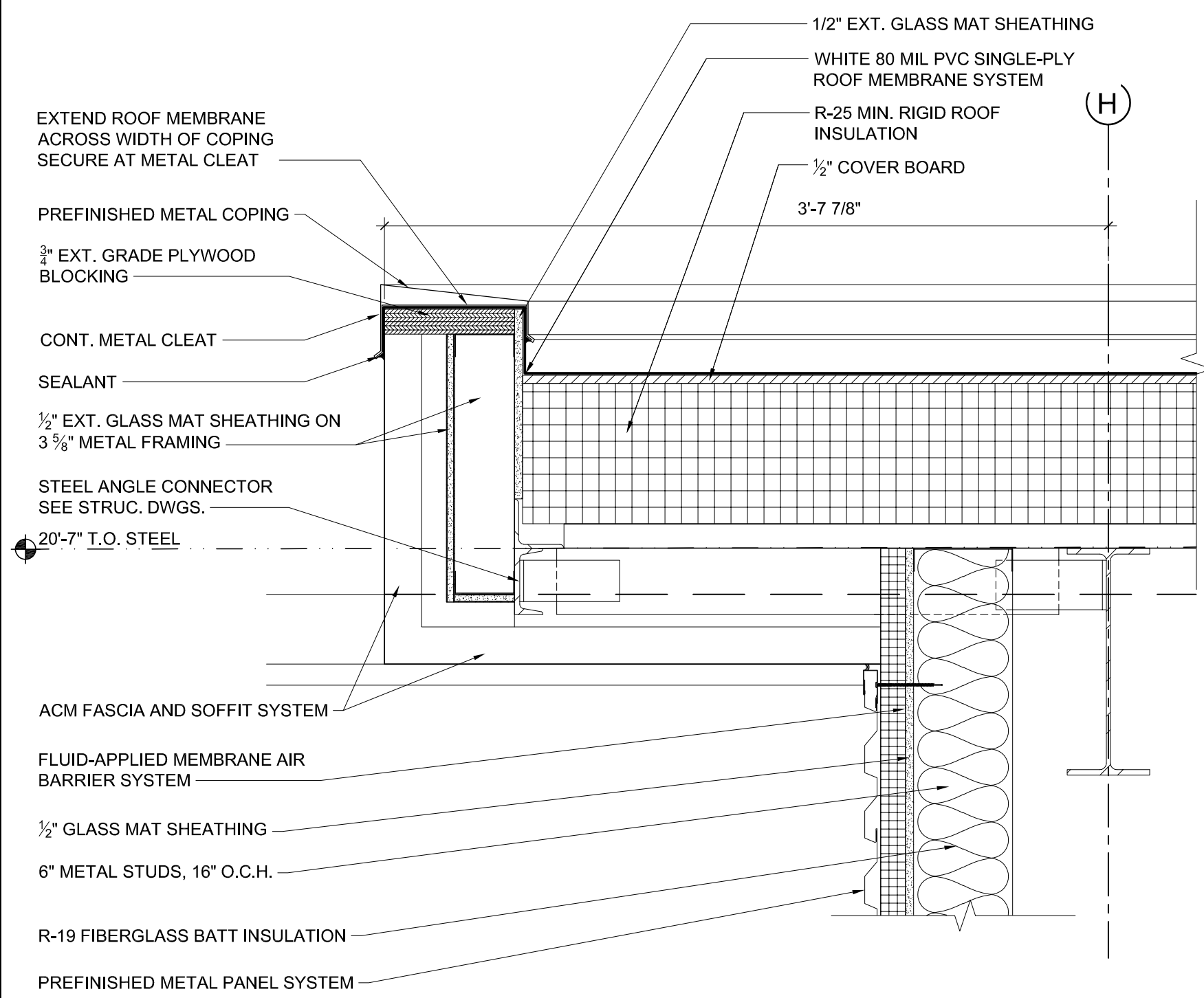
SECTION DETAIL SCALE: 1 1/2" = 1'-0" 09



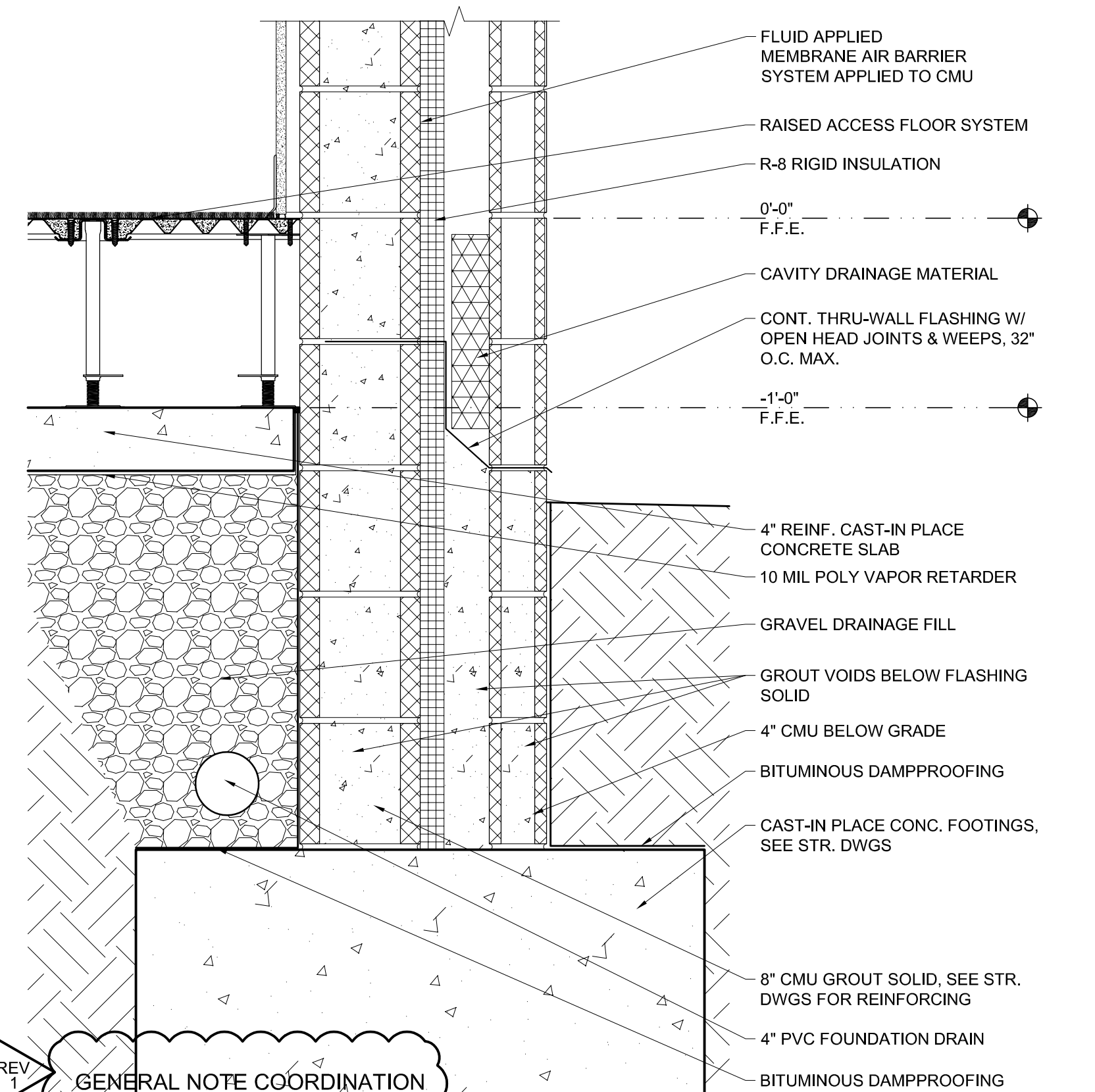
SECTION DETAIL SCALE: 1 1/2" = 1'-0" 06



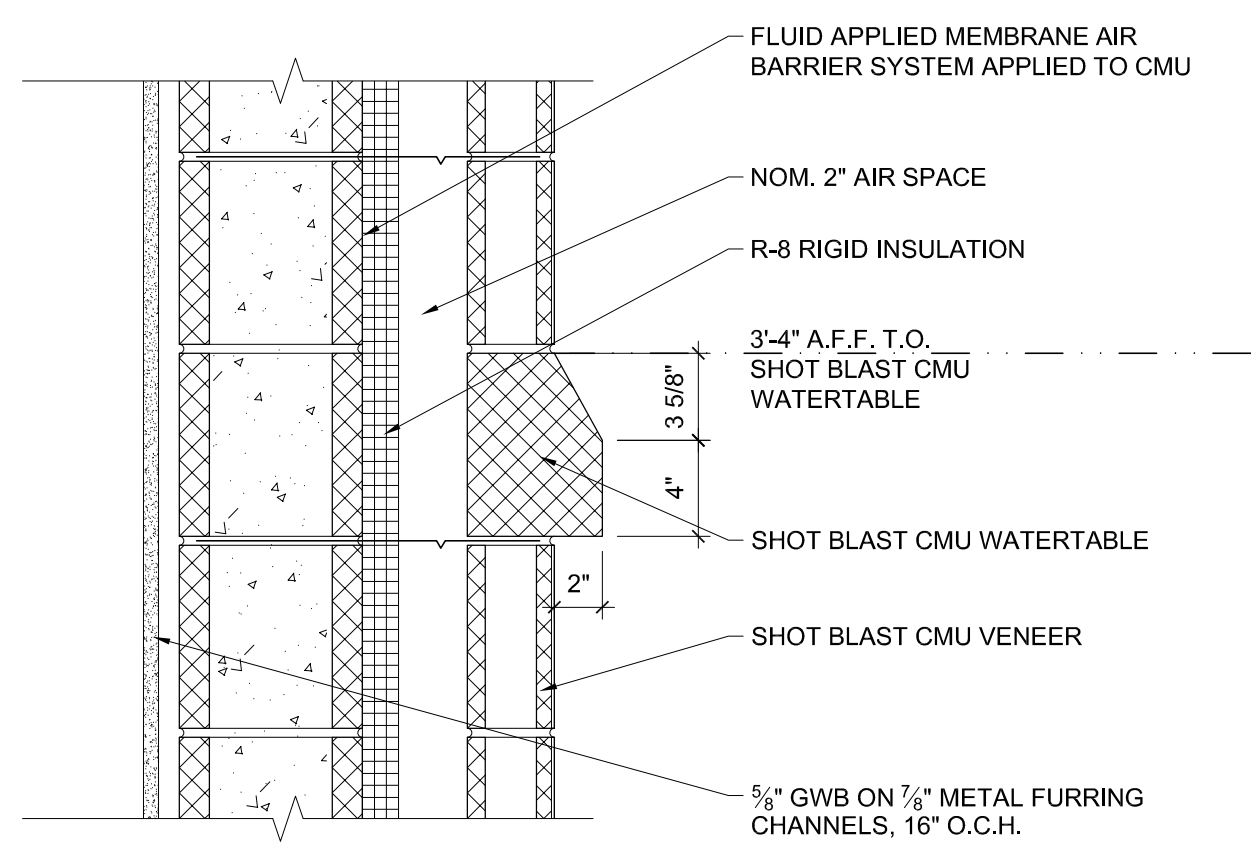
SECTION DETAIL SCALE: 1 1/2" = 1'-0" 03



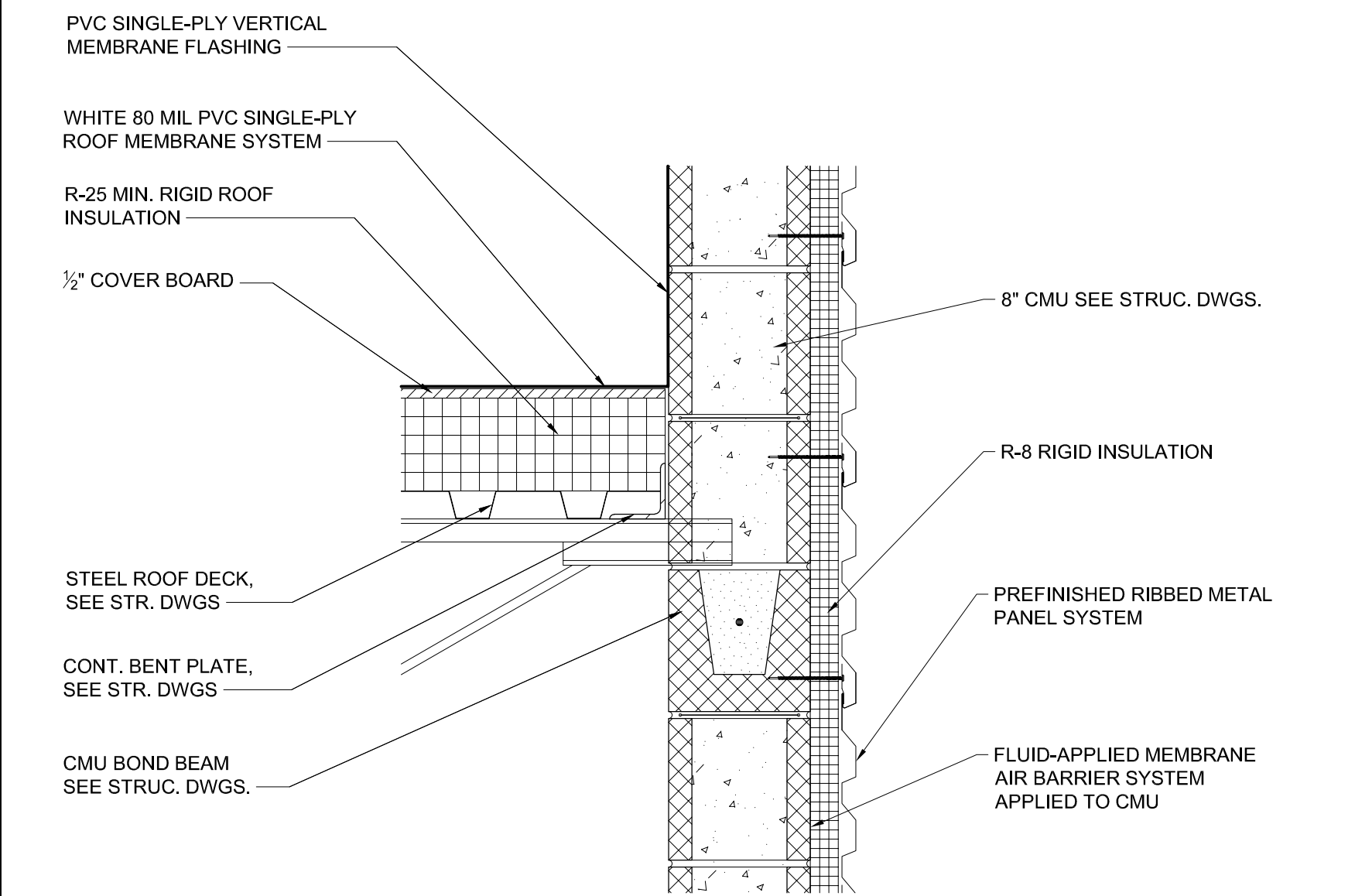
SECTION DETAIL SCALE: 1 1/2" = 1'-0" 08



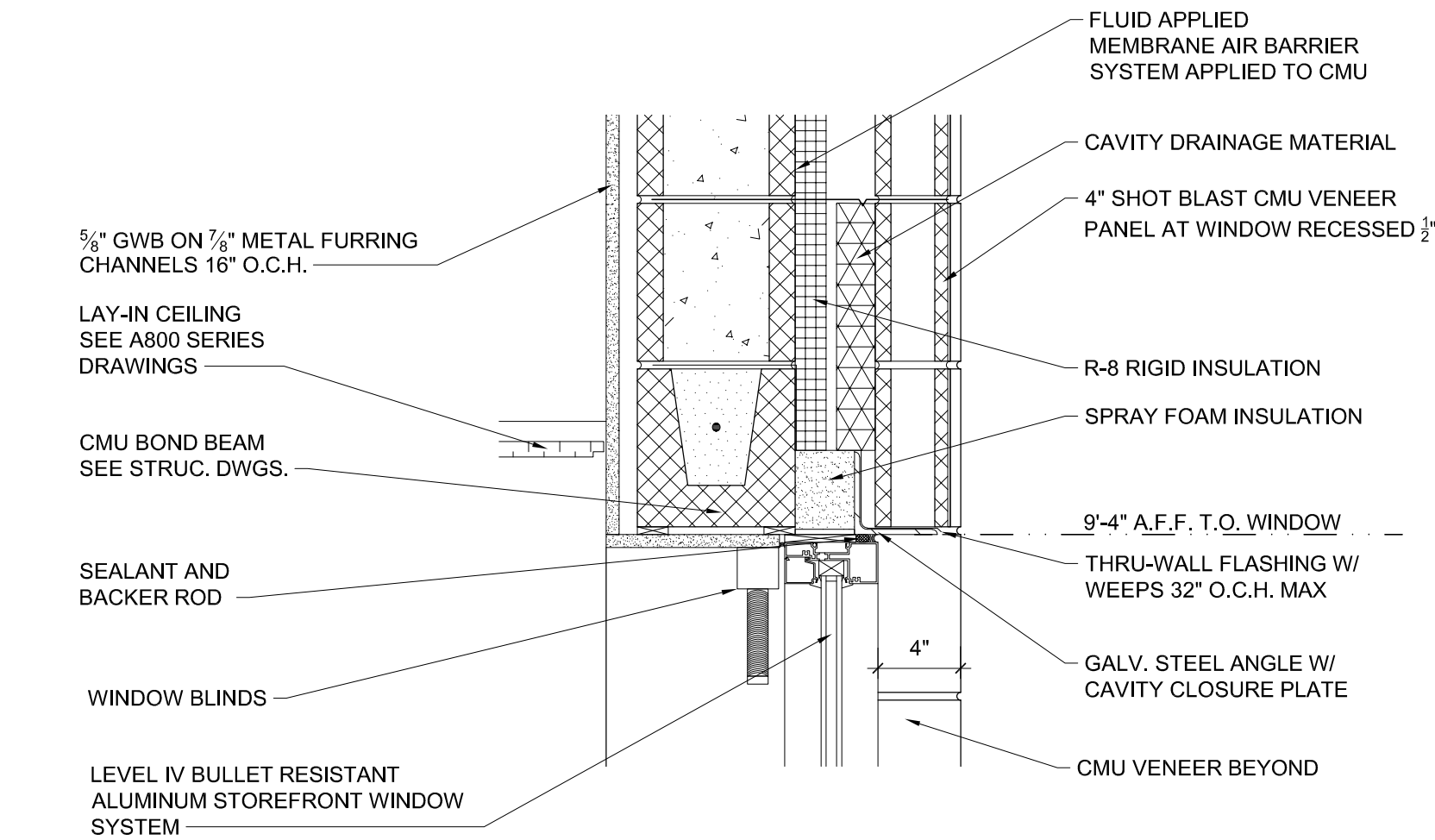
SECTION DETAIL SCALE: 1 1/2" = 1'-0" 05



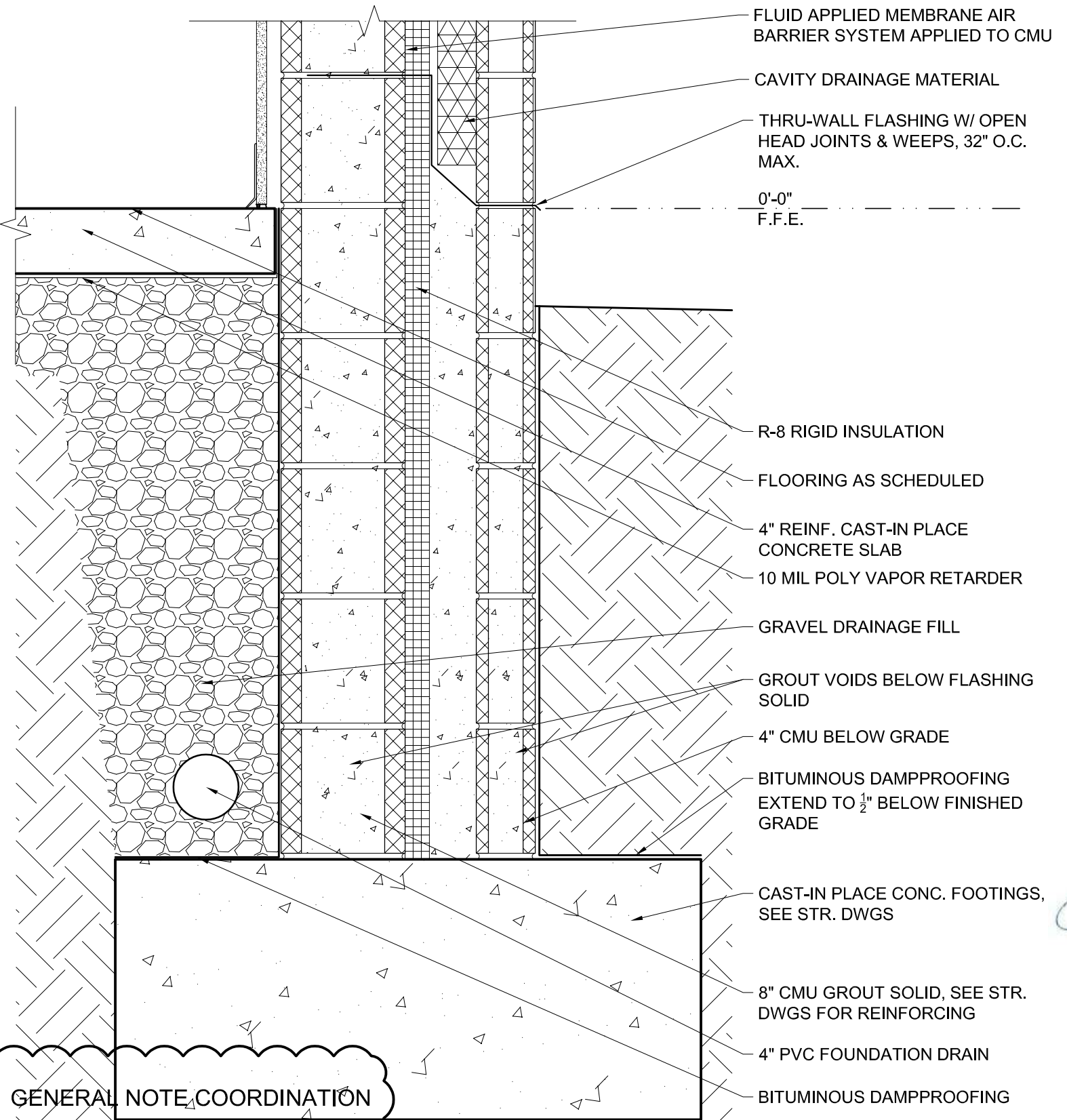
SECTION DETAIL SCALE: 1 1/2" = 1'-0" 02



SECTION DETAIL SCALE: 1 1/2" = 1'-0" 07



SECTION DETAIL SCALE: 1 1/2" = 1'-0" 04



SECTION DETAIL SCALE: 1 1/2" = 1'-0" 01

NOT USED SCALE: NTA 10